

Rittal – The System.

Faster – better – everywhere.

Digital Brochure

ENCLOSURES

POWER DISTRIBUTION

CLIMATE CONTROL

IT INFRASTRUCTURE

SOFTWARE & SERVICES

FRIEDHELM LOH GROUP

www.rittal.ca



Rittal – The System.

Faster – better – everywhere.



System Accessories

Base/Plinth

Flex-Block Base/Plinth System	424
TS Base/Plinth	426
Base/Plinth	433

Base

Base	435
------------	-----

Walls

Sidewalls	450
Partition Walls	453
Interconnect Kit	458

Baying Systems

Baying	460
--------------	-----

Doors/Locks

Door Models	467
Expansion Accessories for TS Modular Front Design	469
Viewing Windows/Operating Panels	473
Lock Systems	478
Hinges	492
Door, External/Internal	493

Roof/Wall Mounting

Roof	499
Wall Mounting	503

Interior Fittings

Mounting Plates	507
Rail Systems	514
Assembly Components	533
Component Shelves	540
System Lights	545
EMC	551
Interior Fittings for Areas at Risk of Earthquake	554
Grounding	555

Cable Routing

Cable Entry	561
Flange Plates	564
Cable Gland	568
Cable Gland	569
Cable Management	572
Cable Routing 19"	582

19" Installation System

Pivoting Frame	587
Accessories for Data Rack	591
Profile Rails	592
Slide Rails	596
19" Fittings	598
Patch Panels	603
Splicing Boxes	604

Human/Machine Interface

Handles	605
External Mounting Accessories	607
Front Fittings	608
Keyboards, Supports and Drawers	610
Interfaces	617
Signal Pillars	619

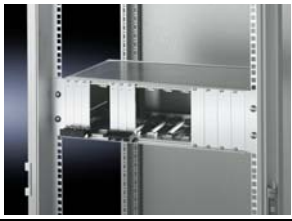
Technical Information

RittalXpress	622
CE/Grounding/HD/Model Numbers	623
Protection Categories	624
NEMA	625
Approvals/Equipment Grounding Conductor	627
Coating/Spray Finish	628



19" Installation System

Profile rails



Adapter profile, 19" (482.6 mm)

for TS

For the installation of subracks and other equipment.

Adapter profiles are easily shortened for partial assemblies.

Supply includes:

- Assembly components

Note:

- The 19" (482.6 mm) measurement is obtained when mounting on the TS frame for enclosures with width 600 mm

+ Accessories:

- Infill panels, see page 593
- Captive nuts, see page 538
- Assembly screws, see page 539
- Slide rails with one-sided mounting, see page 597
- Slide rails with two-sided mounting, see page 597
- Component shelf installation kit, see page 600

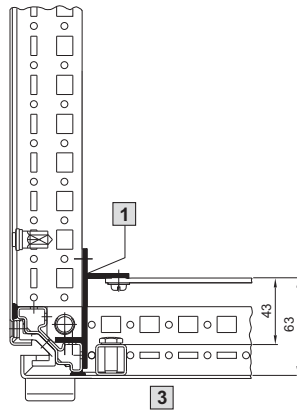
For TS enclosure system¹⁾

For enclosure height inches (mm)	Material	U	Packs of	Model No.
63 (1600)	Extruded aluminum section	33	4 pc(s).	8613.060
71 (1800)		38	4 pc(s).	8613.080
79 (2000)		42	4 pc(s).	8613.000

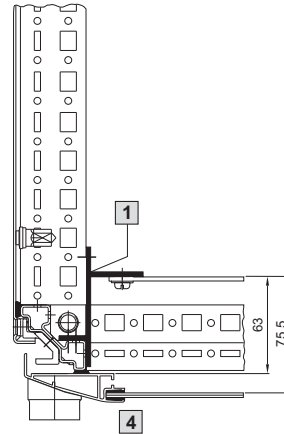
¹⁾ For rear installation in electronic enclosure, see page 593

Mounting examples for TS:

Drawing 1



Drawing 2

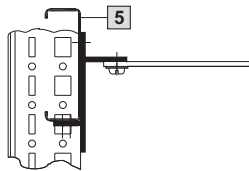


Drawing 1 and 2:

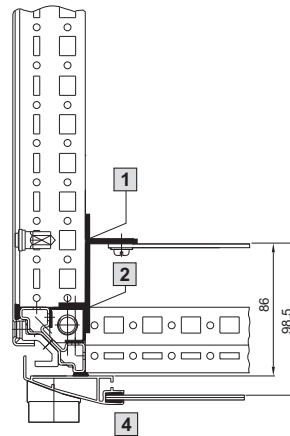
Adapter profile or adapter piece mounted in foremost installation position directly on the vertical profile.

If slide rails with two-sided mounting (see page 597) are installed, the same profiles or adapter pieces also need to be mounted at the rear on the vertical profile.

Drawing 3



Drawing 5



Drawing 3:

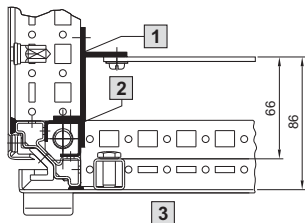
When mounted on 2 vertically installed PS punched sections, there is complete flexibility in how the enclosure depth is used.

Drawing 4 and 5:

Greater clearance to the door can be created when mounted on adapter rails for PS compatibility.

In this position the slide rails can be installed with one-sided mounting.

Drawing 4



- 1 Adapter profile/piece
- 2 Adapter rail
- 3 TS carbon steel door

- 4 TS glazed door
- 5 Punched section without mounting flange

Adapter pieces, 19" (482.6 mm)

for TS, SE

"1 U" part for adapter profiles.

For the installation of individual sub racks and other equipment.

Supply includes:

- Assembly components

Mounting examples:

Can be found on page 592

Note:

- The 19" (482.6 mm) measurement is obtained when mounting on the TS frame for enclosures with width 600 mm

U	Packs of	Model No.
1	4 pc(s).	8613.010



Accessories:

- Captive nuts, see page 538
- Assembly screws, see page 539
- Slide rails with two-sided mounting, see page 597
- Component shelf installation kit, see page 600



Adapter profile, 19" (482.6 mm)

for rear installation in TS electronic enclosures

To install sub racks on both sides, and to mount slide rails 8613.150, 8613.160 and 8613.180 (see page 597).

Mounting is on the inner mounting level.

The outer mounting level remains free, e.g. for cable routing, on TS system chassis mounted in the depth.

Material:

- Extruded aluminum section

Supply includes:

- Assembly components

Note:

- Design similar to adapter profiles, 19" (482.6 mm) (see page 592) but asymmetrical height, suitable for TS electronic enclosure

For enclosure height inches (mm)	U	Packs of	Model No.
63 (1600)	33	2 pc(s).	8613.360
79 (2000)	42	2 pc(s).	8613.300



Accessories:

- Captive nuts, see page 538
- Assembly screws, see page 539
- Slide rails with two-sided mounting, see page 597
- Component shelf installation kit, see page 600



Possible alternative:

- Adapter pieces, 19" (482.6 mm), see page 593



Infill panels, 19" (482.6 mm), horizontal

for adapter profiles

To infill between installed 19" (482.6 mm) equipment positioned in the full enclosure height and the enclosure clearance height.

Material:

- Extruded aluminum section

Supply includes:

- Assembly components

For enclosure height inches (mm)	Packs of	Model No.
63/79 (1600/2000)	2 pc(s).	8613.040
71/87 (1800/2200)	2 pc(s).	8613.030



19" Installation System

Profile rails



Profile rails, 19" (482.6 mm)

for TS

L-shaped mounting angle

L rails accommodate the installation kits of server systems. Integrated U markings on the front facilitate systematic assembly within the 19" level.

Technical description:

- 2 mm carbon steel
- Integrated 19" (482.6 mm) punchings (EIA standard)
- Side round and square punchings
- Clear chromated for conductive connection of 19" fixtures

Supply includes:

- Assembly components

Full installation Rack height inches (mm)	U	Packs of	Model No.
71 (1800)	38	2 pc(s).	7827.181
79 (2000)	42	2 pc(s).	7827.201
87 (2200)	47	2 pc(s).	7827.221

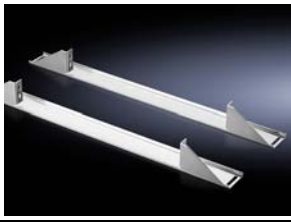


Also required:

- TS system chassis or TS installation bracket as installation kit for profile rails, see page 594
- To mount drawers:
Adapter 7827.300, see page 543

Technical details:

Available on the Internet



TS installation bracket

for L rails in TS, 19" (482.6 mm)

To upgrade existing DK-TS applications.

Installation in 32" (800 mm) enclosure width

The installation bracket is screw-fastened in the enclosure width on the housing frame. The profile rail is fastened to the bracket at the top and bottom. The brackets ensure optimum clearance at the sides for cable routing. For partial enclosure configuration the installation brackets can be fastened to the TS system chassis, 17 x 73 mm, on the outer mounting level of the enclosure frame. Attachment slots allow for completely depth-variable mounting.

Installation position	Packs of	Model No.
center	2 pc(s).	7827.480

Material:

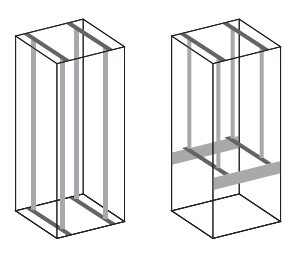
- Carbon steel

Surface finish:

- Zinc-plated

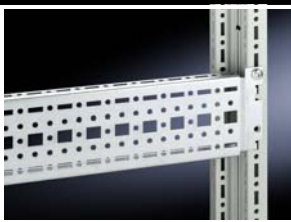
Supply includes:

- Assembly components



Accessories:

- For partial installation, TS system chassis 17 x 73 mm, see page 522 - 523
- For partial installation, L rails, see page 594



TS system chassis as installation kit

for 19" L rails, in TS 19" (482.6 mm)

To upgrade existing DK-TS applications.

Installation in 600 mm enclosure width

The installation kit consists of 4 TS system chassis 17 x 73 mm to accommodate profile rails. One pack is sufficient to configure one or two 19" mounting levels. For extremely heavy installed equipment it is advisable to use an additional system chassis in the middle.

For enclosures		Packs of	Model No.
Width inches (mm)	Depth inches (mm)		
24 (600)	24 (600)	4 pc(s).	8612.060
24 (600)	32 (800)	4 pc(s).	8612.080
24 (600)	39 (1000)	4 pc(s).	8612.000
24 (600)	47 (1200)	4 pc(s).	8612.020

Material:

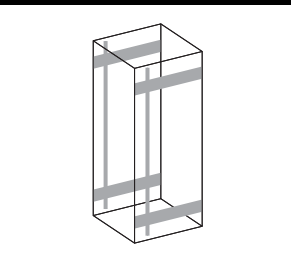
- Carbon steel

Surface finish:

- Zinc-plated

Supply includes:

- Assembly components



Additional attachment for profile rails

for 800 mm wide network enclosures

To upgrade existing DK-TS applications. Additional attachment that prevents distortion of mounted profile rails in case of unevenly distributed loads. Mounted directly on 19" (482.6 mm) profile rails and on the depth-mounted system chassis (internal level).

Material:

- Carbon steel

Supply includes:

- Assembly components

Packs of	Model No.
2 pc(s).	7284.135



Also required:

- TS system chassis, for the inner mounting level, see page 522 – 523



Profile rails, 19"

for FlatBox

L-shaped bracket as 2nd mounting level.

Material:

- Carbon steel

Supply includes:

- Assembly components for fast, tool-free assembly

Note:

- The 2nd mounting level should always be ordered in the same height as the basic housing
- Partial expansion is not possible

U	Packs of	Model No.
6	2 pc(s).	7507.706
9	2 pc(s).	7507.709
12	2 pc(s).	7507.712
15	2 pc(s).	7507.715
18	2 pc(s).	7507.718
21	2 pc(s).	7507.721

